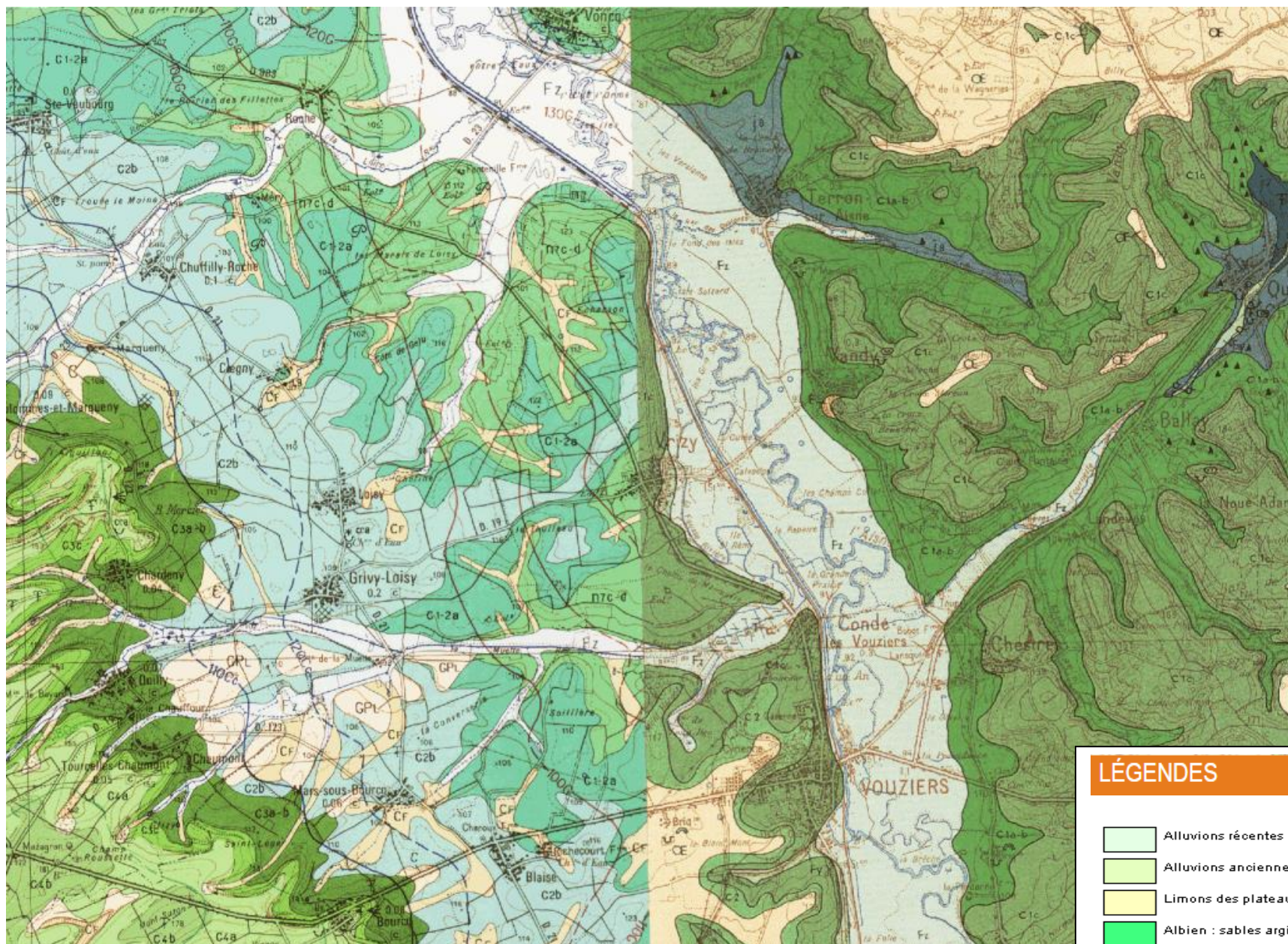
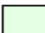

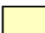





CARTE GEOLOGIQUE DE LA COMMUNE DE VRIZY (source : www.infoterre.brgm.fr)



LÉGENDES

	Alluvions récentes
	Alluvions anciennes
	Limons des plateaux
	Albien : sables argileux et glauconieux
	Séquanien : calcaires lumachelliques et marnes bleues à Astartes
	Rauracien : calcaires et marnes blancs